



# Cancer Health Disparities

**DR. ANA C. SANCHEZ-BIRKHEAD, PHD, APRN**

UCAN GENERAL MEETING

APRIL 26, 2017

# Definition

- ▶ The National Cancer Institute (NCI) defines "cancer health disparities" as **adverse differences** in cancer **incidence** (*new cases*), cancer **prevalence** (*all existing cases*), cancer **death** (*mortality*), cancer **survivorship**, and **burden of cancer** that exist among specific population groups in the United States.

# A closer look...

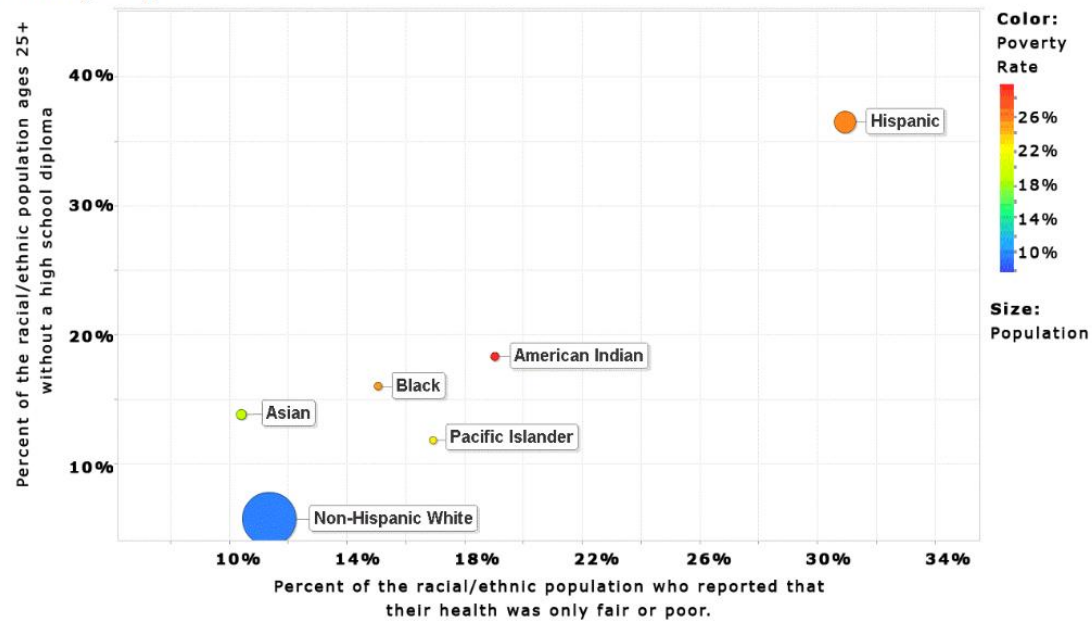
- ▶ Certain groups in this country suffer disproportionately from cancer and its associated effects, including premature death
- ▶ African Americans/Blacks, Asian Americans, Hispanic/Latinos, American Indians, Alaska Natives, and underserved Whites are more likely than the general population to have higher incidence and death for certain types of cancer



# How are we doing in Utah?

## Disparities Among Utah Racial/Ethnic Groups

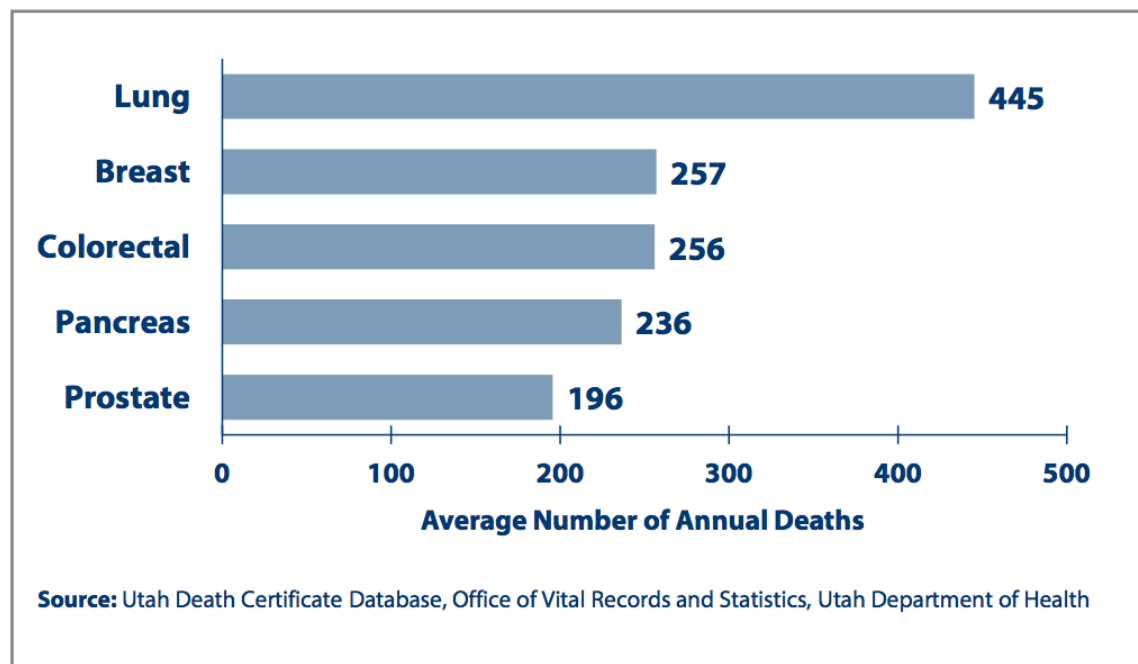
Figure 2. Education, general health, poverty, and population estimates for each racial/ethnic group.



Sources: Fair/poor health data: Utah Behavioral Risk Factor Surveillance System, 2009-2011, Age-adjusted; Education, poverty and population data: American Community Survey, 2009-2011.

# Cancers in Utah

**FIGURE 6** Top Five Leading Cancers by Number of Annual Deaths, Utah 2012-2014

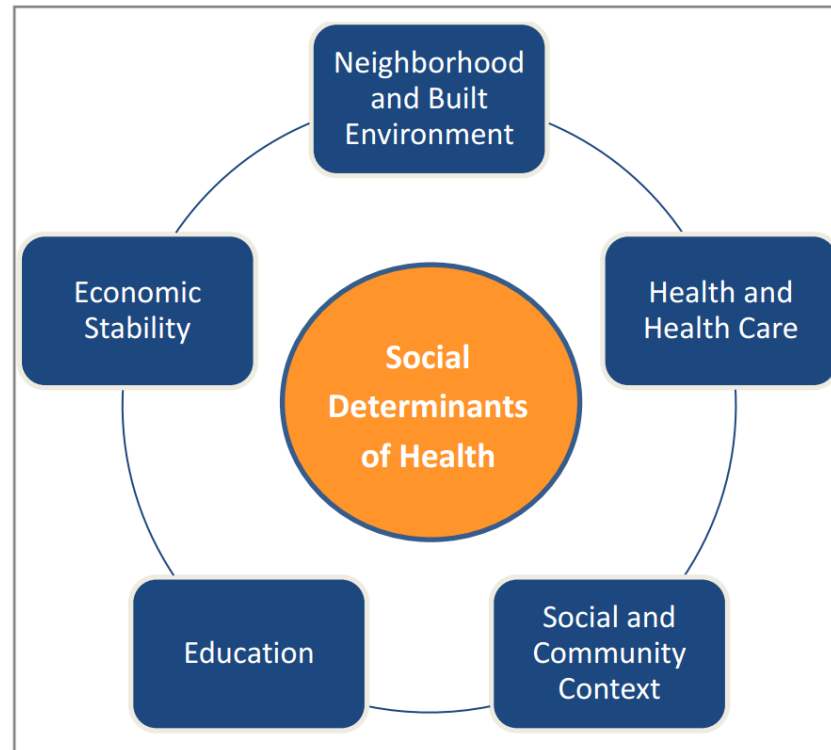


What disparities do you see?



# Social Determinants of Health

**FIGURE 9** Social Determinants of Health





# Examples of *social determinants* include:

- ▶ Availability of resources to meet daily needs (e.g., safe housing and local food markets)
- ▶ Access to educational, economic, and job opportunities
- ▶ Access to health care services
- ▶ Quality of education and job training
- ▶ Availability of community-based resources in support of community living and opportunities for recreational and leisure-time activities
- ▶ Transportation options
- ▶ Public safety
- ▶ Social support
- ▶ Social norms and attitudes (e.g., discrimination, racism, and distrust of government)
- ▶ Exposure to crime, violence, and social disorder (e.g., presence of trash and lack of cooperation in a community)
- ▶ Socioeconomic conditions (e.g., concentrated poverty and the stressful conditions that accompany it)
- ▶ Residential segregation
- ▶ Language/Literacy
- ▶ Access to mass media and emerging technologies (e.g., cell phones, the Internet, and social media)
- ▶ Culture

What are you doing in your organizations to ameliorate disparities?



# Please consider our UCAN State Plan Priority Area Goals

- ▶ **Goal:** Increase the number of Utahns who receive recommended cancer screenings.
- ▶ **Goal:** Increase the number of Utahns who meet the current Dietary Guidelines for Americans.
- ▶ **Goal:** Increase the number of Utahns who meet the current Physical Activity Guidelines for Americans
- ▶ **Goal:** Prevent skin cancer
- ▶ **Goal:** Ensure that the needs of cancer survivors and their caregivers are met throughout the continuum of care.
- ▶ **\*\*These priority areas represent the highest burden areas for cancer control in the state and reflect UCAN's desire to achieve meaningful and lasting impact during the next five years.**



**Thank you!**